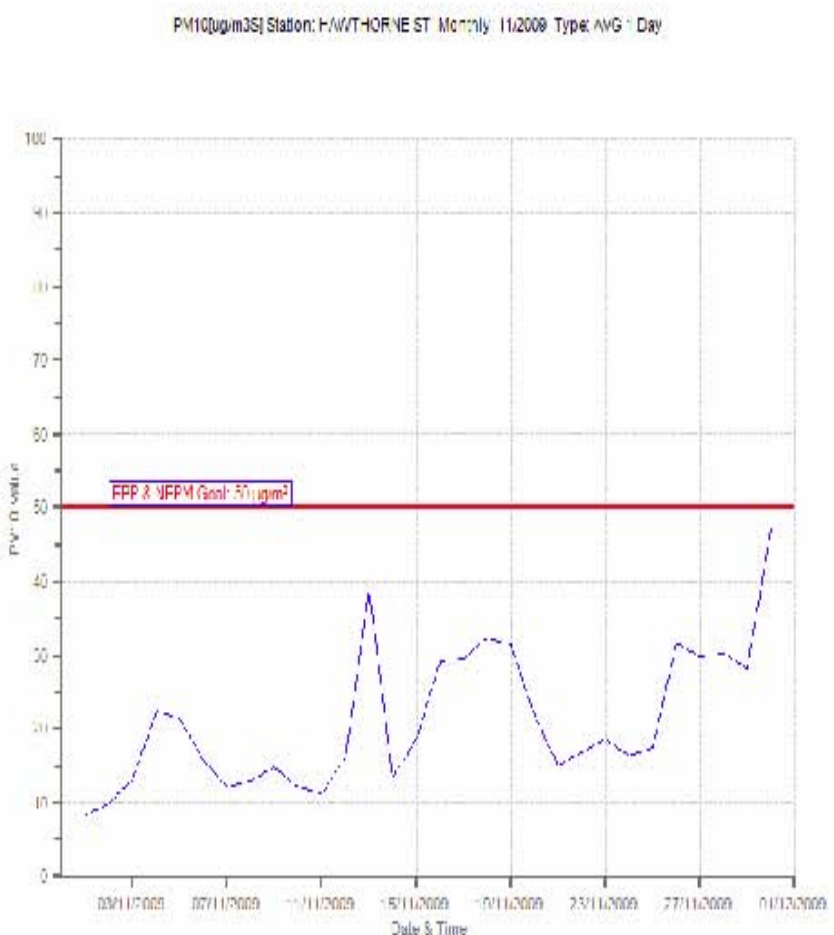
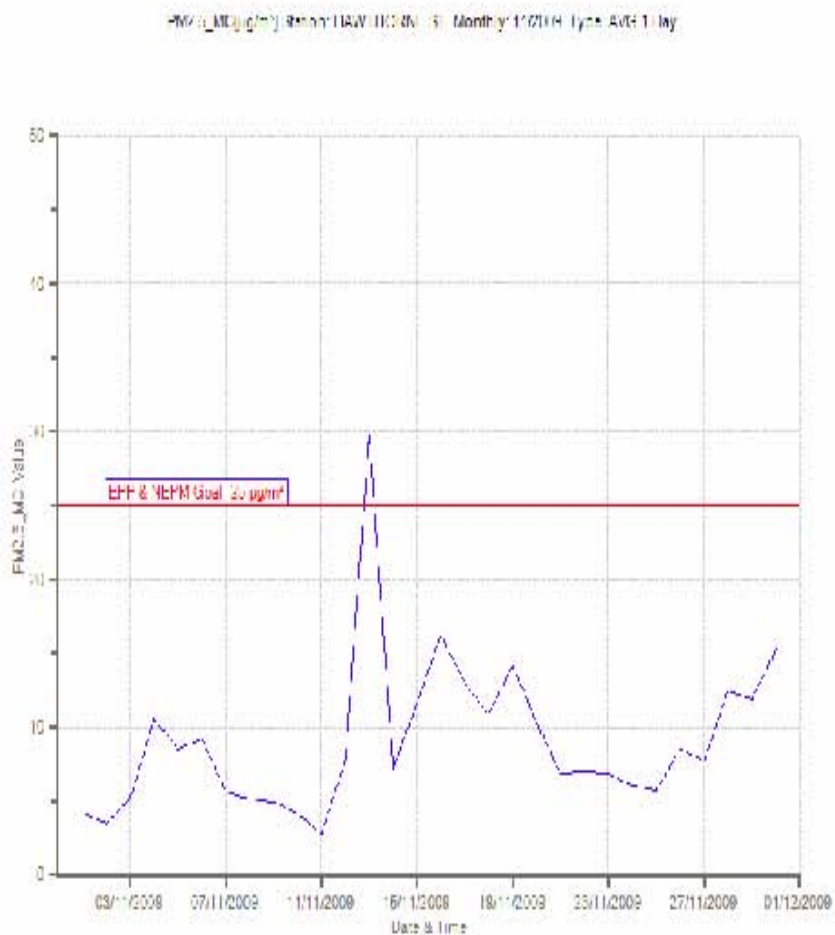
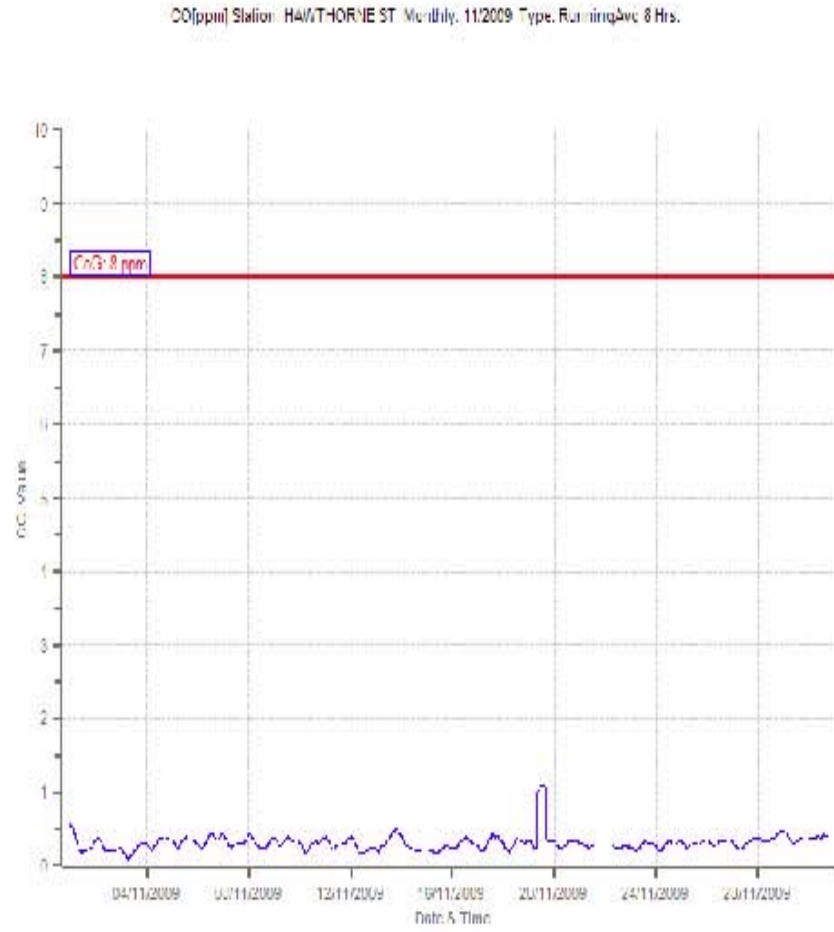
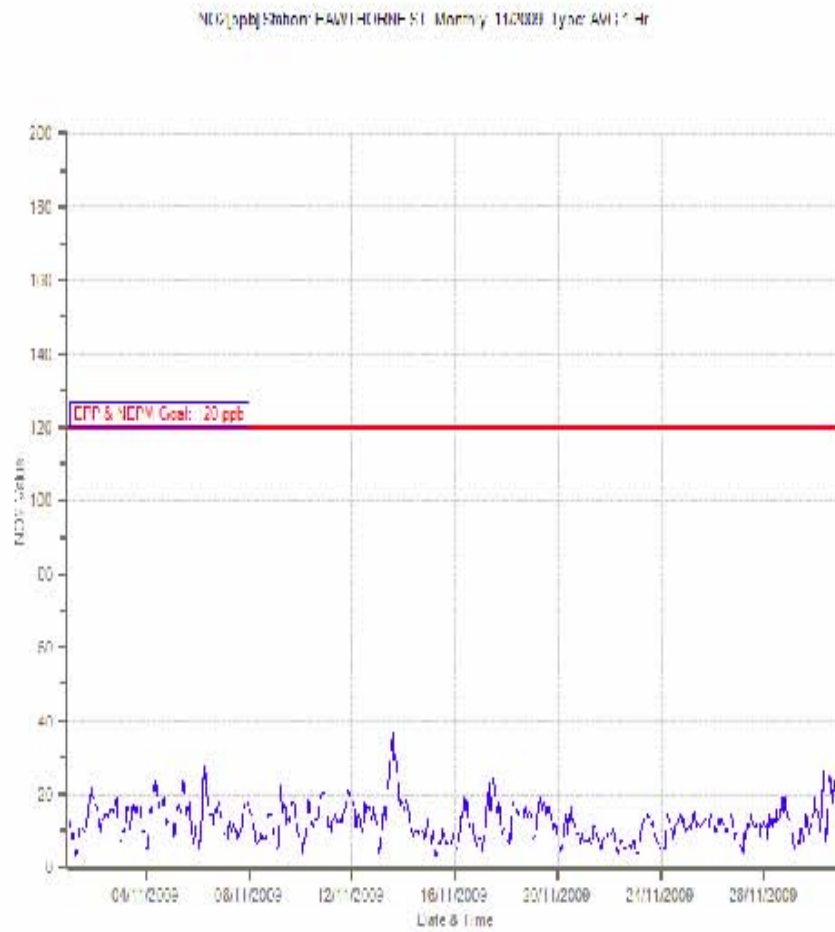


Ambient Air Quality Monitoring Data Report - November 2009



1. Hawthorne St (Southern Low Level) - Maximum Values for November 2009

Parameter	Goal	Averaging Period	Maximum value	Wind Direction	Date	Time
NO2	120 ppb	1 hour	36.4 ppb	65°	13/11/2009	14:00
CO	8 ppm	8 hours	1.111 ppm	93°	19/11/2009	13:30
PM2.5	25 µg/m³	24 hours	29.8 µg/m³	140°	13/11/2009	n.a
PM10	50 µg/m³	24 hours	47.1 µg/m³	147°	30/11/2009	n.a

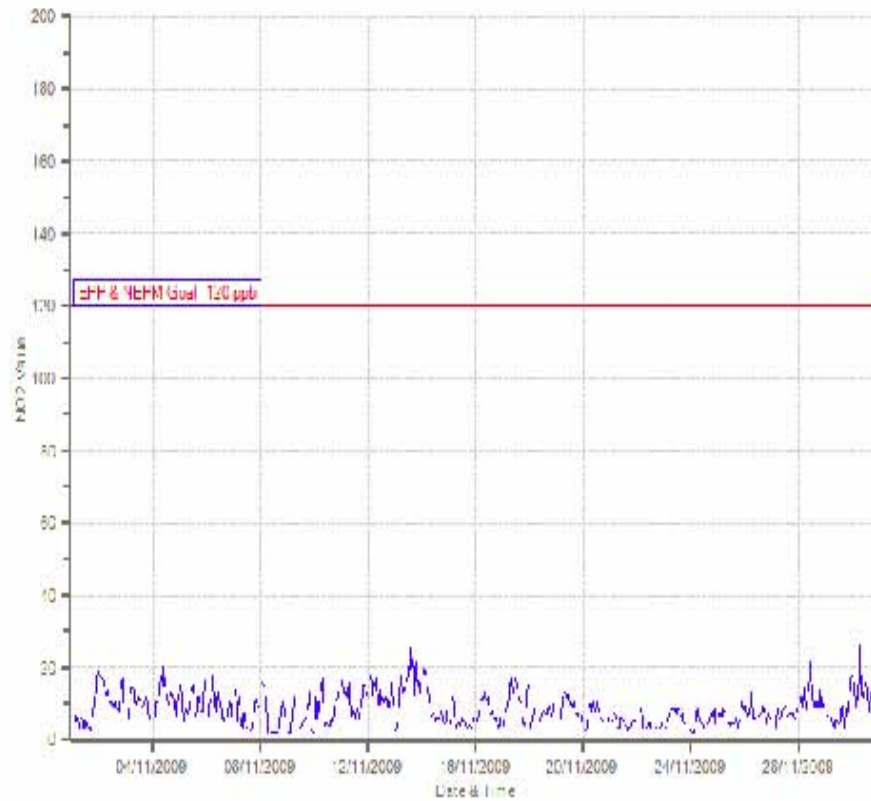


Notes:

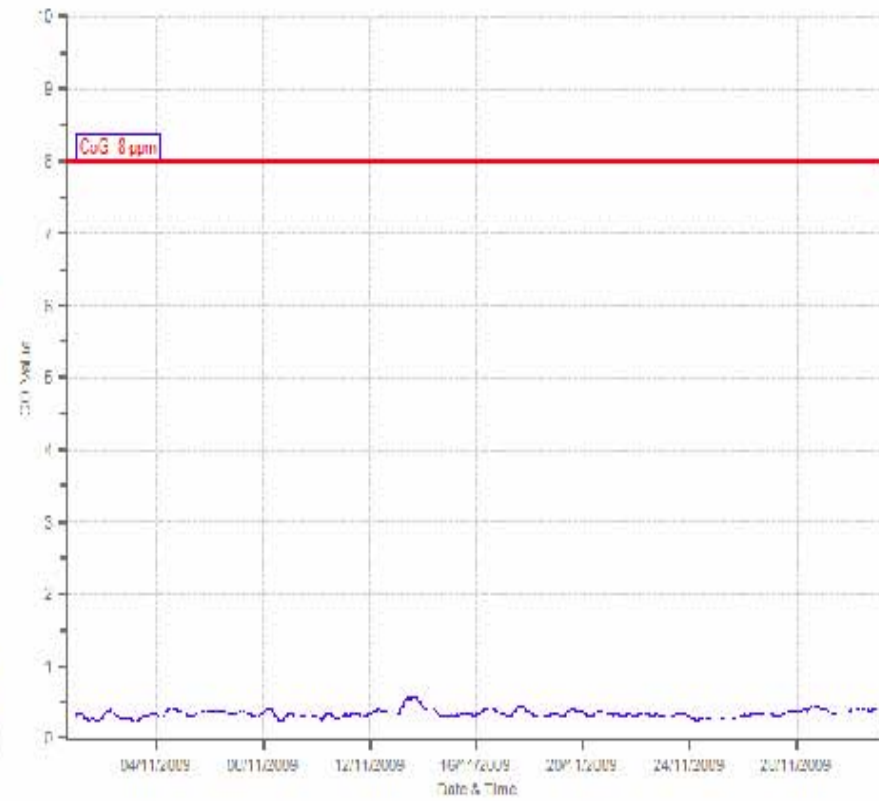
2. Landcentre (Southern High Level) – Maximum Values for November 2009

Parameter	Goal	Averaging Period	Maximum value	Wind Direction	Date	Time
NO2	120 ppb	1 hour	26.2 ppb	145°	30/11/2009	09:00
CO	8 ppm	8 hours	0.564 ppm	138°	13/11/2009	16:45
PM2.5	25 µg/m ³	24 hours	27.8 µg/m ³	168°	13/11/2009	n.a
PM10	50 µg/m ³	24 hours	38.4 µg/m ³	168°	13/11/2009	n.a

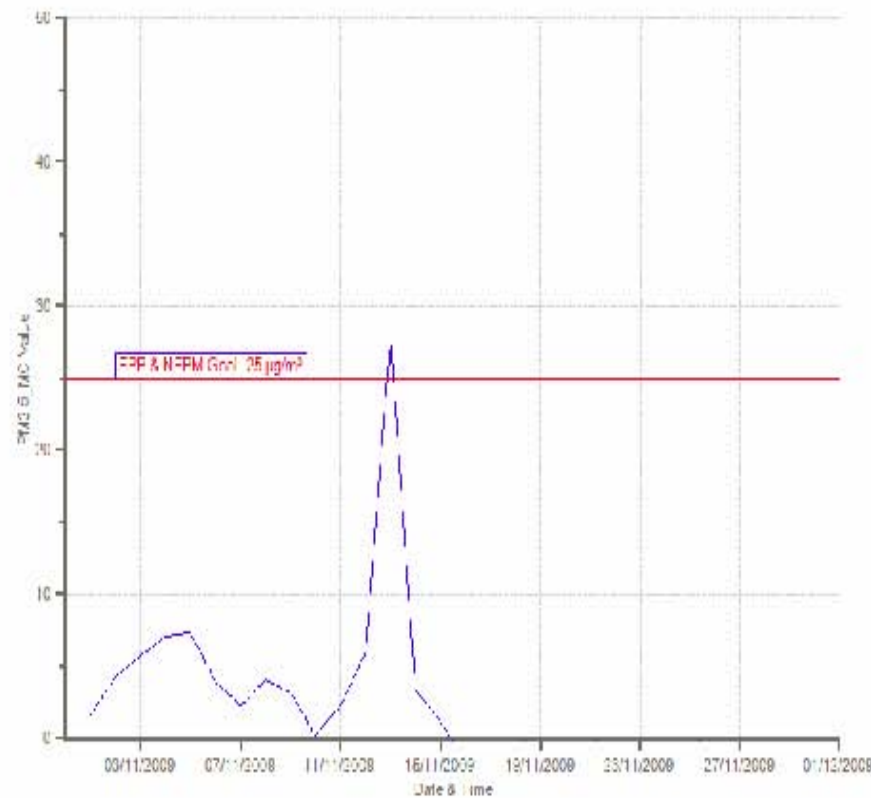
NO2[ppb] Station: LANDCENTRE Monthly: 11/2009 Type: AVG 1 Hr



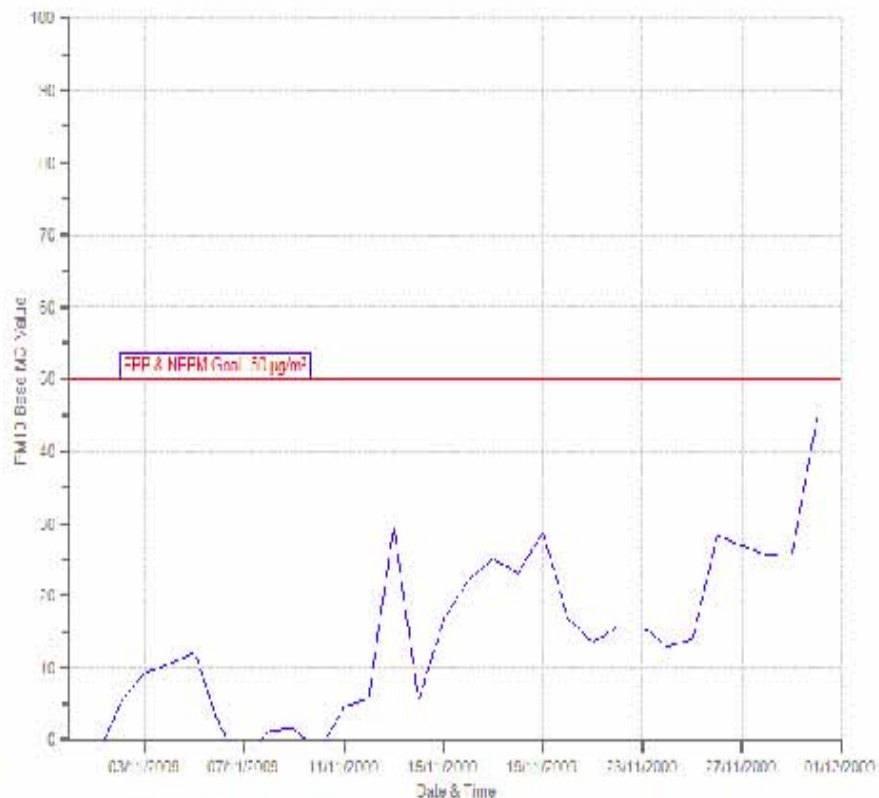
CO[ppm] Station: LANDCENTRE Monthly: 11/2009 Type: RunningAvg 8 Hrs



PM2.5_MG[µg/m³] Station: LANDCENTRE Monthly: 11/2009 Type: AVG 1 Day



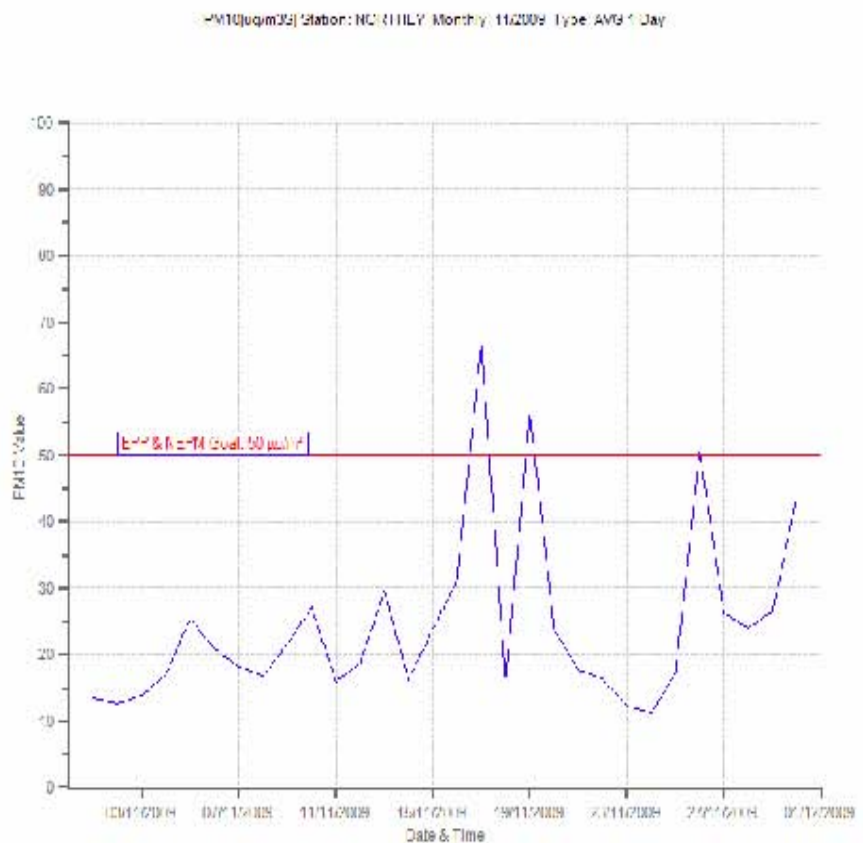
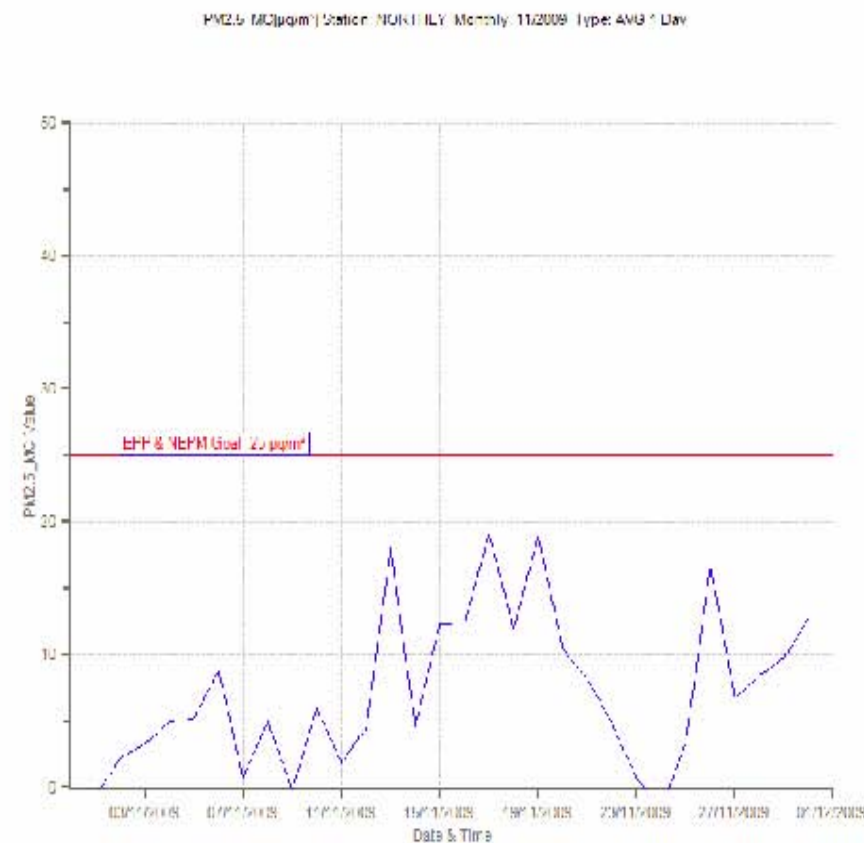
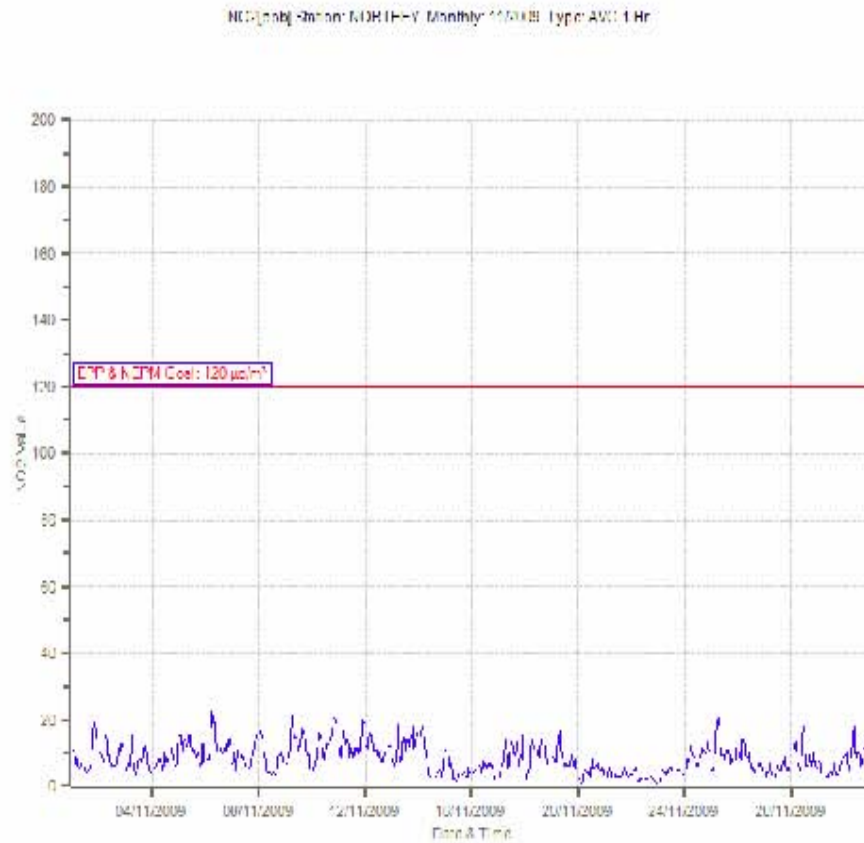
PM10_Base_MG[µg/m³] Station: LANDCENTRE Monthly: 11/2009 Type: AVG 1 Day



Notes:

3. Northey St (Northern Low Level)– Maximum Values for November 2009

Parameter	Goal	Averaging Period	Maximum value	Wind Direction	Date	Time
NO2	120 ppb	1 hour	23.7 ppb	145°	30/11/2009	09:00
CO	8 ppm	8 hours	0.465 ppm	183°	13/11/2009	12:40
PM2.5	25 µg/m ³	24 hours	19.2 µg/m ³	140°	17/11/2009	n.a
PM10	50 µg/m ³	24 hours	67.2 µg/m ³	140°	17/11/2009	n.a



Notes:

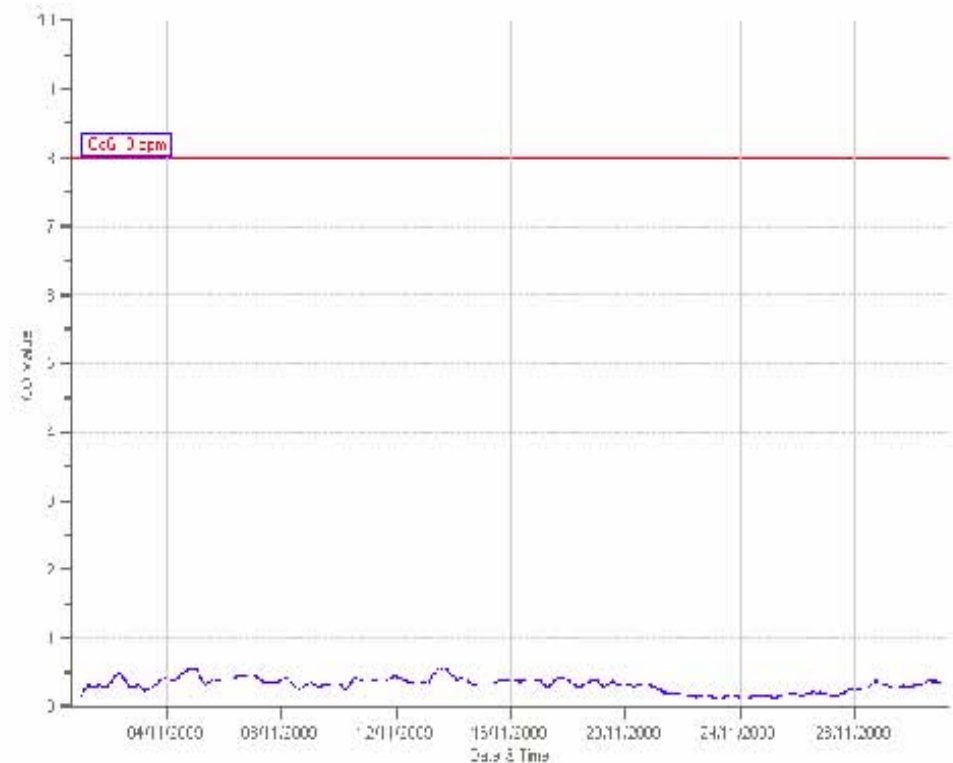
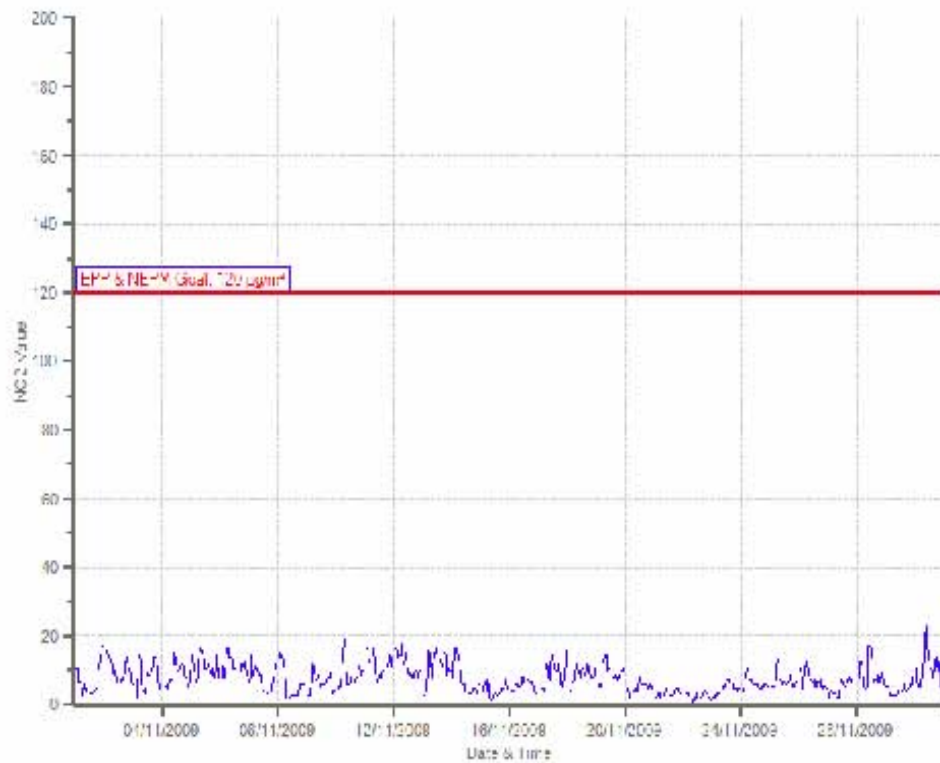
- Exceedances: PM10 exceedances observed on the 3rd and 14th of October, 2009 were a result of high particulate matter levels in the atmosphere which affected the whole of the South-east Queensland region.

Royal Brisbane Hospital (Northern High Level) – Maximum Values for November 2009

Parameter	Goal	Averaging Period	Maximum value	Wind Direction	Date	Time
NO2	120 ppb	1 hour	22.7 ppb	140°	30/11/2009	10:00
CO	8 ppm	8 hours	0.556 ppm	132°	13/11/2009	16:35
PM2.5	25 µg/m ³	24 hours	25.0 µg/m ³	175°	13/11/2009	n.a
PM10	50 µg/m ³	24 hours	51.6 µg/m ³	222°	30/11/2009	n.a

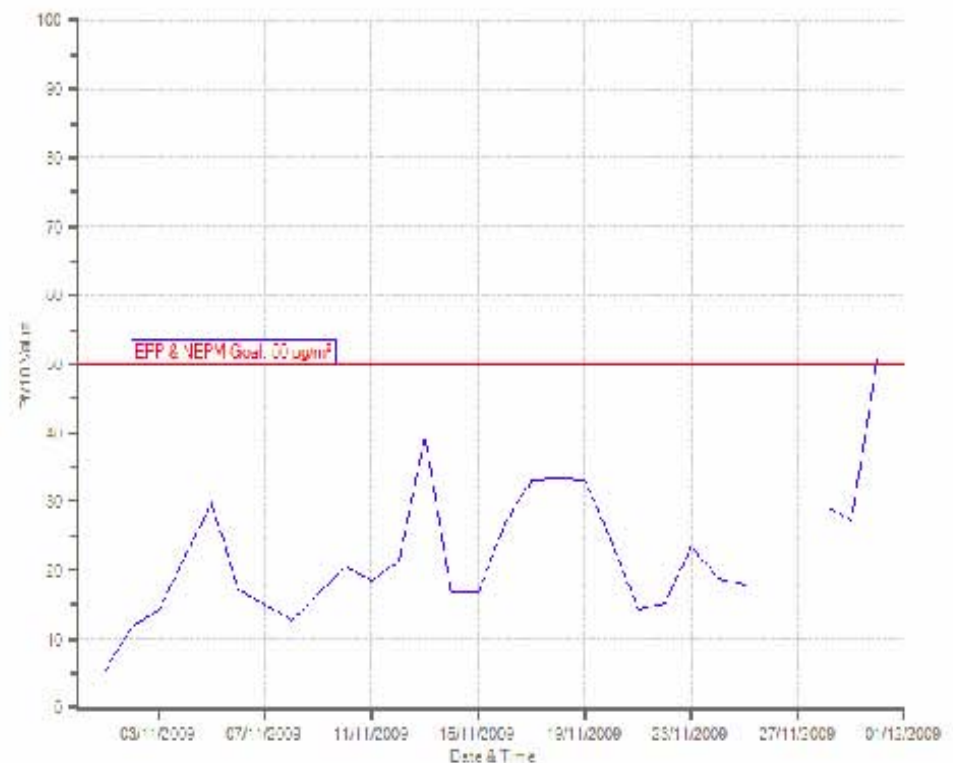
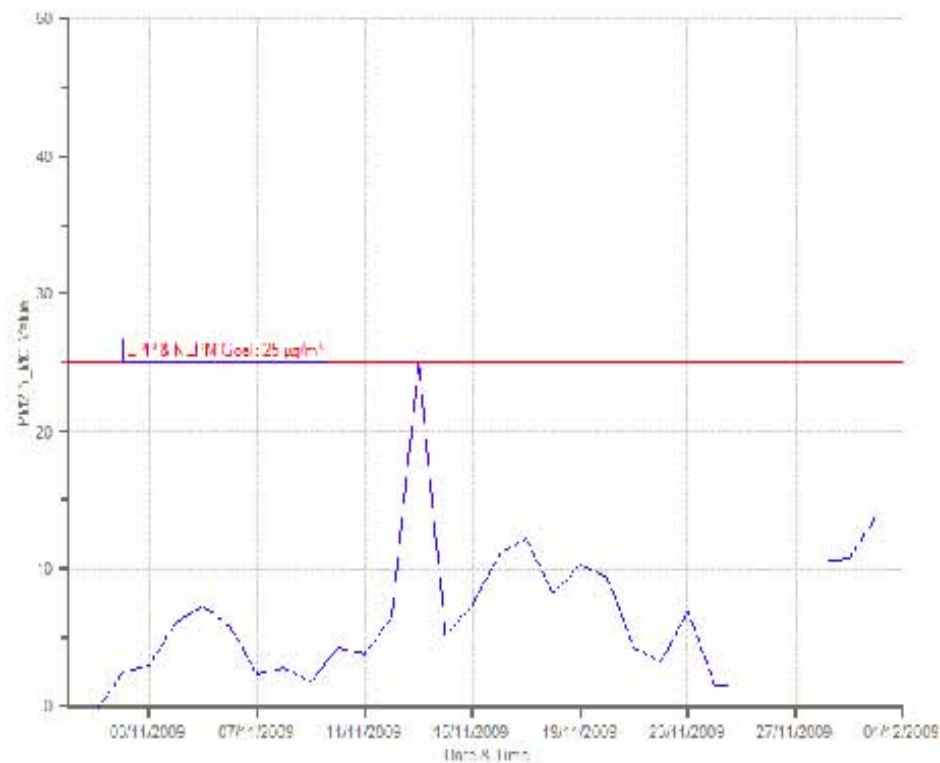
NO2[ppb] Station: RBH - Monthly: 11/2009 Type: AVG: 1 Hr

CO[ppm] Station: RBH - Monthly: 11/2009 Type: Running/8 Hrs



PM2.5[µg/m³] Station: RBH - Monthly: 11/2009 Type: AVG: Day

PM10[µg/m³] Station: RBH - Monthly: 11/2009 Type: AVG: Day



Notes:

- Exceedances: PM10 exceedances observed on the 3rd and 14th of October, 2009 were a result of high particulate matter levels in the atmosphere which affected the whole of the South-east Queensland region.

